

## Medical Plaza Office Building • SingerArchitects



The building, conceived as a shelter from the street, protects its visitors from the sun and rain as they enter the site, and discloses an inner world which is entered as a visitor leaves the automobile and moves to the upper level.

**The shape of the building grows directly out of a physical expression of structure-wrapped-around-space-wrapped-around-circulation. Each complements and is a part of the other.**

The site was planned initially for maximum automobile parking since allowable rental area is tied directly to that availability. The structure was designed to fit that pattern. This sequence provided rental space which exceeded the Owner's original projections by 20%.



Location: **Plantation**

Completion: **1972**

Owner: **Dr. Robert Uchin**



## PUBLICATIONS

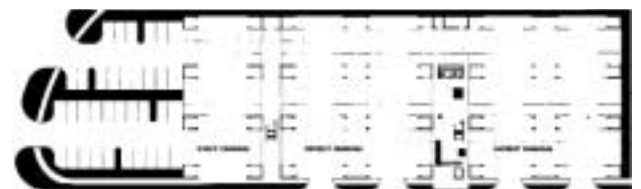
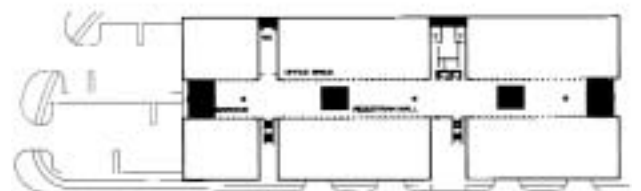
- 1978 **National Concrete Masonry Association, *Pictorial, Medical Plaza Office Building***
- 1978 **Nikkei Architecture (Japan), *Medical Plaza.***
- 1978 **Architectural Record, Apr, *Small Office Buildings - Thoughtful Design for a Booming Construction Field.***
- 1974 **The Florida Architect, Sept/Oct.**
- 1974 **The Miami Herald, Oct 13. *Awards Stress Honesty.***



## AWARDS

- 1974 **Honorable Mention *Florida Chapter, AIA***
- 1974 **Concrete Structure of the Year *Florida Concrete and Products Association***
- 1974 **Award of Excellence *Broward Chapter, AIA***

MALL LEVEL



GROUND LEVEL