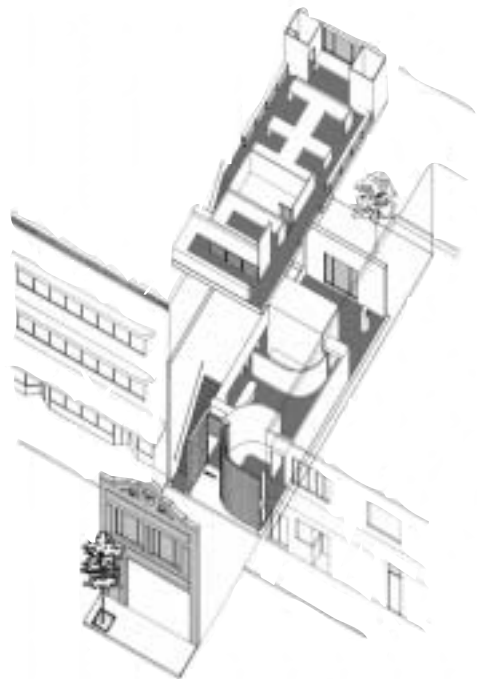




This project is conceived to permit coexistence with a 1916 poured concrete shell. The original building, constructed for a newspaper, is simple and direct - a facade and two party walls — with a small open-to-the-sky courtyard at the rear.



The interior structure is placed within the original shell, but allows it to be seen and understood. The only structural modification was the removal of a portion of the intermediate floor to create a spatial continuity.

The current use, designed to accommodate an architectural office, attempts to maintain the simplicity of the original by functioning as a single open space both horizontally and vertically.

Location: **Fort Lauderdale**

Completion: **1980**

Owner: **Donald Singer**



PUBLICATIONS

- **1991** **Sun-Sentinel**, Arts & Leisure, Mar 31, *Creating Art Out of Space.*
- **1988** **Broward Review**, Apr 15, *Wild Style.*
- **1985** **Sun-Tattler**, Spotlights, Aug 23, *Singer's Gifts to Florida's Architecture.*
- **1983** **The Hi-Riser**, Feb 10, *Best Local Architectural Works For 1982 Selected.*
- **1982** **The Miami Herald**, Jan 17, *The Return of Glass Block.*
- **1981** **Sun-Sentinel**, Today, July 1, *He Has Designs on Downtown.*
- **1980** **Fort Lauderdale News & Sun-Sentinel**, Oct 12, *Historic Building Gets Fresh Start in New Downtown.*



AWARDS

- **1982** **Award of Honor**
Broward Chapter, AIA